

área total - matrícula 25.361

De	Para	Coord. N(Y)	Coord. E(X)	Azimute	Distância
1	2	6.971.533,2991	442.478,6594	164°16'08"	13,79 m
2	3	6.971.520,0225	442.480,3991	164°16'08"	14,95 m
3	4	6.971.505,6328	442.484,4524	62°11'55"	29,61 m
4	5	6.971.519,4435	442.510,6452	53°59'19"	23,24 m
5	6	6.971.533,1061	442.529,4422	37°29'15"	38,03 m
6	7	6.971.563,2846	442.552,5884	28°00'11"	103,51 m
7	8	6.971.654,6756	442.601,1881	104°56'02"	55,00 m
8	9	6.971.640,5014	442.654,3313	351°36'10"	240,84 m
9	10	6.971.878,7618	442.619,1597	77°47'43"	70,17 m
10	11	6.971.893,5944	442.687,7365	344°43'20"	157,71 m
11	12	6.972.045,7350	442.646,1784	254°43'20"	47,94 m
12	13	6.972.033,1016	442.599,9283	165°04'43"	9,00 m
13	14	6.972.024,4048	442.602,2458	129°27'19"	10,39 m
14	15	6.972.017,8005	442.610,2702	164°43'20"	15,20 m
15	16	6.972.003,1344	442.614,2763	254°43'20"	30,00 m
16	17	6.971.995,2294	442.585,3366	206°34'49"	70,32 m
17	18	6.971.932,3450	442.553,8734	173°15'39"	49,09 m
18	19	6.971.883,5962	442.559,6338	203°24'35"	27,14 m
19	20	6.971.858,6929	442.548,8520	177°09'56"	195,08 m
20	21	6.971.863,8515	442.558,4985	208°00'11"	88,08 m
21	1	6.971.586,0804	442.517,1414	217°29'14"	66,52 m

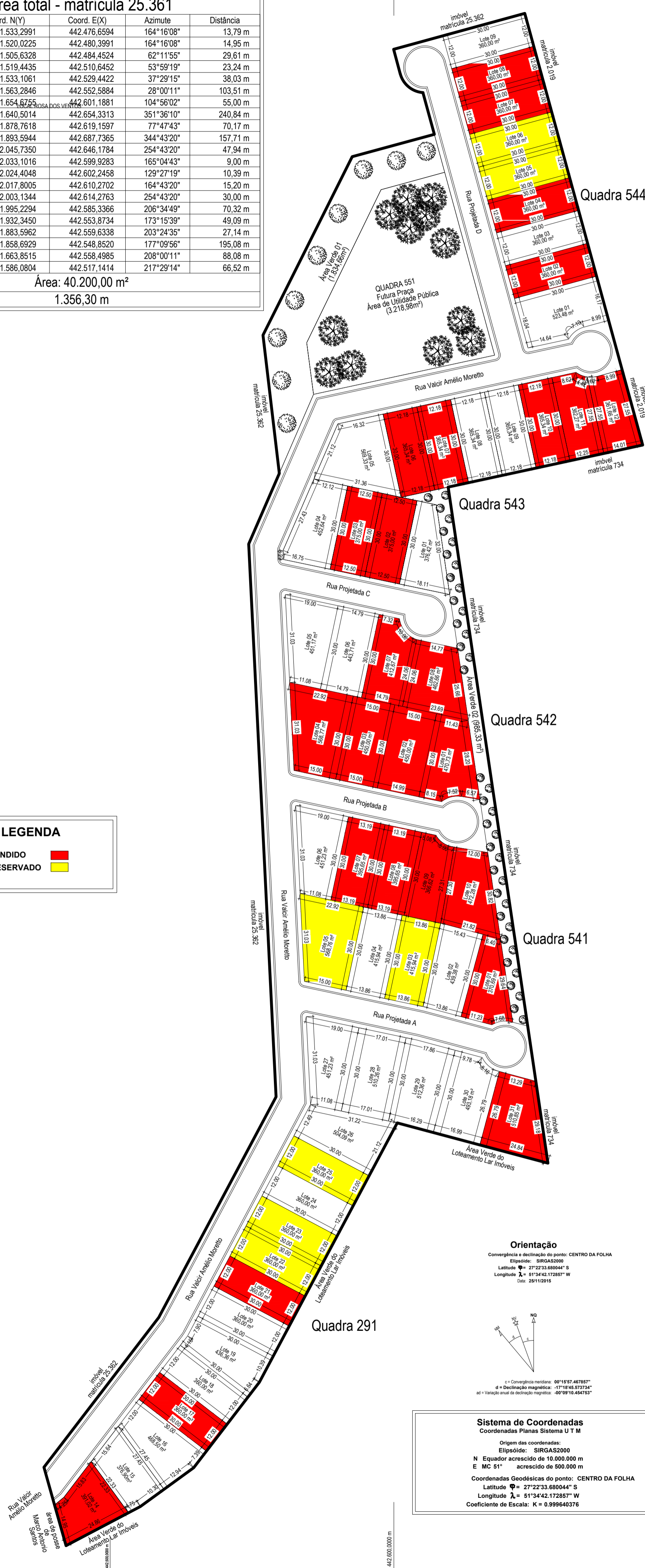
Área: 40.200,00 m²
1.356,30 m

LEGENDA

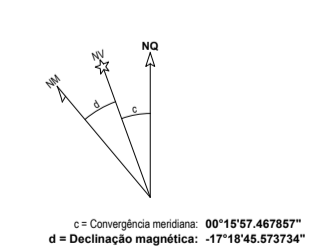
VENDIDO ■

RESERVADO ■

N 6.971.800.000 m
N 6.971.900.000 m
N 6.971.000.000 m
N 6.971.700.000 m
N 6.971.600.000 m
N 6.971.500.000 m



Orientação
Convergência e deflexão do ponto: CENTRO DA FOLHA
Escala: SROGA2000
Latitude $\Phi = 27^{\circ}23'36,88044''$ S
Longitude $\lambda = 51^{\circ}34'42,172857''$ W
Escala: 28/1/2015



Sistema de Coordenadas
Coordenadas Planas Sistema U T M
Origem das coordenadas:
Eliptóide: SROGA2000
N Equador acréscido de 10.000.000 m
E MC 51° acréscido de 500.000 m
Coordenadas Geodésicas do ponto: CENTRO DA FOLHA
Latitude $\Phi = 27^{\circ}23'36,88044''$ S
Longitude $\lambda = 51^{\circ}34'42,172857''$ W
Coeficiente de Escala: K = 0,999640376